

October 2016



October 2016 Nature Coast Decorative Artists Volume 19 Issue 10



A Letter from the President:

Hello Fall: Can you tell that I am excited for fall to arrive LOL? When I look back at summer now it doesn't seem like it was so long, but gosh I sure do remember the temps and also my really first brush with a potential hurricane! (Hope everyone else all survived without any problems) Thanks but no thanks being we just got the tail of it, would hate to have the body(or eye) hit us. Anyway, we survived some rain and wind, and now time to

move on.

Boy what a nice Saturday we had this month at our chapter. Was sorry to see that more couldn't come for our 20th celebration but with the weather and all I totally understand. We had a great project to paint. A great big thank you to Lois for teaching her Izzy the Frog on the tin lamp shade. It was a lot of fun and I already have someone's name on it. Also the ones who couldn't make it missed an awesome lunch. We had all kinds of good food and Carole Sheftic brought an awesome Hawaiian punch made with pineapples, it was yummy, we had no duplicates which is a big surprise. We missed you all, maybe in 20 years we can do it again (hmmmm let me think about that one LOL).

We had our board meeting on Monday, Labor Day, see even on Labor Day we still labored! LOL We had several things to talk about and I know that you did receive a email from Pat talking about what the board had suggested on the dues.....that is dues to SDP, that NDCA would pay for the people who have attended meetings regularly this year as a little thank you for coming and being active, also because it's our 20th anniversary. Pat also asked if there was any questions to please send me a email, I have gotten a couple in regards to the subject, so if you have any please let me know. That's if your not planning on attending the October meeting which is where we will discuss it further. Also that's when we will vote yay or nay! We also talked about the Christmas party this year and have that firmed up and we will also talk about that at the next meeting . See it's very important to attend so you know what's going on and be in the know?

Well lets see at our next meeting, Carole Sheftic will be teaching her watercolor Owl. That should be a lot of fun, and I'm really looking forward. Never thought I would enjoy watercolors like I do, but then again if I hadn't joined the chapter I would of never probably had the opportunity to even try other mediums to see if I even liked watercolor etc. I know since the time I joined I have been able to try so many mediums that I just feel so blessed.

With all this hot weather and the rain I hope you all are taking advantage of having time to paint (that's if your not traveling in that case safe travel) hay can't go outside, housework is done, what else can we do, right? I know I have been enjoying myself, and hope you all are doing the same?

Guess that's it for now, hope to see all your smiling faces at our next chapter meeting on October 1st. Till then hugs, take care and be well.

Linda

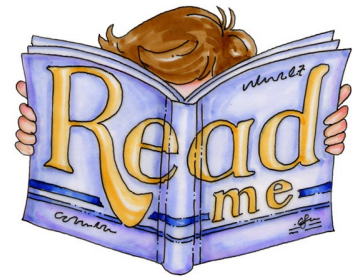
October 2016



NCDA Meeting Minutes 9/3/16

Pat Otto Secretary

President Linda Duff opened the meeting at 9:15 and welcomed everyone.



Programs: Jeanette Seese introduced Lois Owens as our teacher for today's program. She called on Carole Sheftic to present next month's project.

October: Carole Sheftic will teach a barn owl in watercolors. She passed out supply lists.

November: Marge Thompson will teach a snowman with a border of roses in acrylics.

See the website for photos, sizes and supply lists.

Carole Sheftic reminded everyone that Janelle Johnson will teach a one day seminar in colored pencil at Manatee Haven Chapter. She explained the cost for members and non-members. She showed the subject (a tiger) at the show and tell time. The date is October 15th. See their website for contacts and photos. <http://www.manateehavendecorativeartists.org/>

Membership: Rhonda Norton was stated we have 10 members and one guest today.

Secretary: Jeanette Seese moved to accept the minutes as printed in the newsletter. The motion was seconded Sharon Poorman. The motion passed.

Treasurer: Carol Hechler asked for a motion to accept the treasurer's report as printed in the newsletter; the motion was made by Jeanette Seese and seconded by Lois Owens. The motion passed.

Newsletter: Carole Sheftic was back from vacation and reported all is going well.

Publicity: Eileen Peters was absent. Librarian: no report

Sunshine: Mary Davis was absent but a note will be sent to her about Eileen's accident.

Secret Sister: Linda Duff reminded participants to send cards for any occasion to the "Sisters".

Ways and Means: Ellen Annibali was absent. Sharon Poorman sold tickets. Carol Hechler stated the raffle income this month from the birthday raffle is \$41. We thanked those who brought the food items.

Old Business: Linda Duff mentioned that Marge Thompson is heading up the nominating committee and Marge asked that we be courteous and willing to help when she calls.

Christmas Party: We still don't have a chairperson. It will be discussed at the board meeting.

New Business: None

Show and Tell: Many beautiful art pieces were shown by Marge Thompson, Rhonda Norton, Pat Otto, Lois Owens, Jeanette Seese, and Carole Sheftic.

Birthday Raffle: Rhonda Norton won the present brought in by Carol Hechler. Virginia Hughes won the gift from Jean Thompson.

Adjournment: Jeanette Seese moved to close the meeting. Linda Duff closed the meeting at 10:30

Respectfully submitted,

Pat Otto, Secretary

October 2016



Programs

submitted by Jeanette Seese

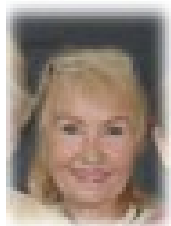
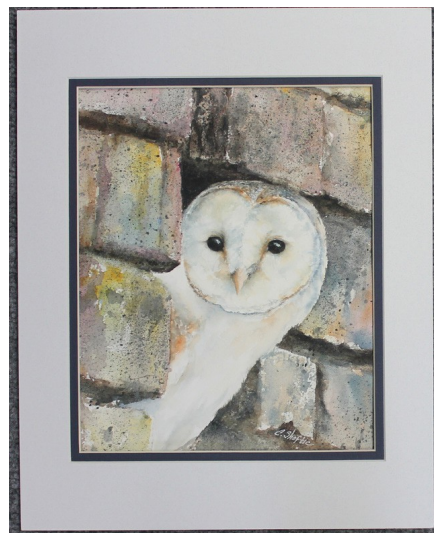
First of all, thank you to Lois Owens for teaching in September. Unfortunately, the weather was a factor for some of you, making it difficult to attend her class. Sorry to say, you missed a good one. It was a fun, relaxed class, and the frog shade was so cute. Everyone enjoyed the results!

For our project for October: Carole Sheftic will present a watercolor/mixed media class. The topic will be an owl. The supply list was handed out at the September meeting and is also at the end of this newsletter. The pattern will be handed out at the beginning of class.

November: Our last project for the year will be given by Marge Thompson, and will be a Christmas snowman with a rose border.

Remember to sign up for our classes in plenty of time for the teacher to prepare packets.

Please check out the remainder of the years projects on our Workshop Calendar page on our website. Pictures and needed workshop information are placed on the web www.naturecoastdecorativeartist.com as soon as they are available from the instructor.



Sunshine

Mary Davis

October Birthdays
Kay Wells... October 10
Beverly Brockschmidt ...October 20
Ellen Annibali... October 22



Don't forget to let Mary know if there is a member who needs a little Sunshine.

Note: all committee and board member emails are always located in our newsletter and on our membership roster handed out by Membership.

October 2016



Membership

Rhonda Norton

It's time for renewing your membership. I will be collecting membership for NCDA (\$10.00) and for Weeki Wachee Senior Center (\$10.00) at the Oct and Nov. Meetings. You can also mail in your membership. Please make out two checks and mail to: Rhonda Norton 2026 Godfrey Ave. Spring Hill, FL. 34609

The form is at the end of this newsletter. We would appreciate it if you filled it out and updated all the information and included it with your membership when you turn it in at the meeting or mail it



Secret Sister

Linda Duff

There are not any major holidays coming up for a couple of months so let's get creative and see what we can come up with. Most of all just have some fun and enjoy!

Are you looking for a special (or not so special) day to send a card.. check out this site <http://www.holidayinsights.com/moreholidays> Everyday is a Happy day for something!!!!

MARK YOUR CALENDAR!!!!!! December 3rd 2016

Sneak Peak for our Christmas Party:

We will be talking about this more at the October meeting...but Jeanette is again in charge of the "Entertainment" for our Christmas Party on December 3rd and she has added a Volunteer Christmas Cookie exchange.



Here are her rules :

Make about 2 dozen holiday cookies.

We ask for homemade cookies ONLY.

Put them in a plastic container, box or other container that will open easily.

Each person who brings cookies will get a cookie or two (depending on the number of participants) .

We will put the cookie containers in a line, and each person will take from the containers a cookie or two.

Bring a plastic Zip Loc to put your cookies in to take home.

Leftovers will be eaten at the party.

There will be a surprise element to this also but we can not disclose it SINCE it is a Surprise!

Hope you will join the fun....



Ways and Means and Hospitality

Ellen Annibali



"Spooktacular" October Birthday Raffle!

*Two months left this year! Please don't forget to bring your "Birthday Raffle gift" with a value of \$20.00 in an "attractively wrapped" box/gift bag on your Birthday Month. Look for a "cup" in front of each gift to drop your raffle ticket(s) into for a chance to win. *If you will not be present at that time, you may bring your gift ahead of time for Ellen to hold until your Birthday Month, or you may "switch" to another month by calling or emailing Ellen if you'd like to see the lucky winner in-person!*

Note: We are also responsible for bringing a light "Breakfast Snack" on your Birthday Month to make it easier to remember, as we did in the past.

Our "December Babies" have already participated this year, thank you!

We always welcome your fabulous recipes if you have a desire in-between your painting projects. :)

Thank you to our members who participated while I was away last month!

October Birthday Raffle Gal:

Ellen Annibali – 10/22

November Birthday Raffle Gals:

Kay Wells - 10/10 (moved)

Carol Kuszik - 11/8

Rhonda Norton - 11/25

Marge Thompson - 11/26

Happy Birthday! Don't forget your "ones"!

ART TIP: Homemade WET Palettes - A tip from Peggy Harris

(Shop towels with paint wells created in the damp towels are a holding palette and while very good for keeping paint moist, do not allow you to mix on the palette, etc. They are acceptable for some., but not all, techniques. If unsure, use a real wet palette with sponge/paper.)

1. Select a lidded container. Shallow plasticware works well.

October 2016

Home made wet palette continued:

Place a sponge substitute in the bottom of the container. Real chamois, synthetic chamois or things like ShamWow work well. Also good is a thick bed of 3-4 Viva paper towels folded under to FIT the bottom of the container.

3. Fill the sponge substitute with as much water as it can possibly hold. Do not squeeze out the water. Simply tip the container to allow excess to run off.

4. Place a piece of deli-wrap on the "sponge" base. Select deli wrap that has LITTLE to NO WAX on it - the moisture must be able to soak through the paper in order to reach the paint!

5. CUT off or FOLD under any paper that extends beyond the "sponge" base!!!!!!!!!!

6. I repeat: CUT off or FOLD under any paper that extends beyond the "sponge" base!!!!!!!!!! Paper extending out beyond the "sponge" base is the single greatest flaw I see in homemade wet palettes since it immediately begins to suck dryness into the palette at a rate that not even the wettest palette can withstand!

7. Smooth the paper against the "sponge" base to eliminate as much air as possible that may be lurking between the surfaces.

8. Blot excess water from the surface with a paper towel.

9. Keep the palette closed when not in use.

Treasurer *Carol Hechler*



Nature Coast Decorative Artists -

September 2016

Financial Report

Beginning Balance	\$3967.81
Income	
Class fee (for Lois Owens project)	\$45.00
Ways and Means	<u>\$41.00</u>
	Income Total \$86.00
Expense	
Kally-K's (Deposit for Christmas Party)	\$25.00
Project expence (Printing etc)	\$17.90
Teacher fee (Lois Owens	<u>\$100.00</u>
Total workshop expense	\$142.90
Ending Balance:	\$3,910.91

October 2016

2016 NCDCA Board members and Committee Chairs			
President* Linda Duff 248-703-6529 Ladyotroy1@aol.com	Treasurer* Carol Hechler 352-684-2939 chechler@tampabay.rr.com	Publicity* Eileen Peters 727-301-7469 emjpeters@icloud.com	Philanthropic and Historian positions available
1st VP—Programs* Jeanette Seese 727-857-1045 seese_j@yahoo.com	Newsletter*/Webmaster Carole Sheftic 352-871-3786 csheftic@bellsouth.net	Librarian NEW library list is posted on our website on the Library Page.	Community Display The NCDCA Board
2nd VP—Membership* Rhonda Norton 352-688-9267 Rnorton7@tampabay.rr.com	Sunshine Mary Davis 352-596-7344 mdavis350@tampabay.rr.com	Secret Sister Linda Duff See Pres. Information	Ways and Means*Hospitality Ellen Annibali 352-232-6246 sunnylane02@hotmail.com
Secretary* Pat Otto 352-746-2688 pjottodesigns@gmail.com	Photographer Carole Sheftic 352-871-3786 csheftic@bellsouth.net	Charter Member* Doris Trudeau 815-337-3237 1215 Gerry St Woodstock, Ill 60098	Past President* Pat Otto see information under Secretary
Visit our Wbsite www.NatureCoastDecorativeArtists.Com Note: * designates voting board members			

I Thought you just may want to know.....
what other art groups are planning.....

Manatee Haven Decorative Artists in Citrus county is hosting Janelle Johnson on Oct 15, 2016 for updated info go to www.manateehavendecorativeartists.org

Ocala Decorative Artists is hosting Mary Owens on Saturday October 22, 2016. For updated information go to www.ocaladecartists.com

The Marion County Gourd Arists are making plans for their Annual Gourd Show and Sale Nov. 11-12-13th.
Update at www.marioncountygourdartists.com

The Sunshine State Decorative Artists www.ssdaflorida.com
Announces.... No retreat until 2018.. becauseThe Society of Decorative Painters 45th Conference will be in Daytona Fl. May 17-20th 2017 ... updates at: www.decorativepainters.org

NEW ...The Florida Watercolor Convention is September 23-25 at the Ocala Hilton. Ocala Florida off of rt 200.
The Florida Watercolor Society's 45th Annual exhibit is from Sept 6-October 21st at the Webber Gallery at the College of Central Florida Campus in Ocala on rt 200. A must see if you enjoy watercolor!!!

October 2016

2017 NCDA Membership Form

ALL MEMBERS: Please fill out and hand in with your 2017 dues ...

FILL OUT THE FORM BELOW COMPLETELY, PLEASE PRINT.

Name: _____

Address: _____

Phone: _____

Email: _____

Birthday (Month & Day): _____ If renewal SDP#: _____

Circle all that apply:

I would like my phone # and e-mail to be published for the membership list: Yes No

I am a: Teacher Professional/Commercial Artist Shop Owner Wholesaler Manufacturer's Rep

I heard about NCDA from: the newspaper a friend SDP website

Other: _____

I would be willing to teach or demo at a meeting: Yes No Maybe

I belong to another chapter(s) Yes No If yes, please list _____

For Office use:

Payment Received _____

Date received _____

Mail to:

Rhonda Norton

2026 Godfrey Avenue

Spring Hill, FL 34609

352-688-9267 c-352-247-6593

rnorton7@tampabay.rr.com

October 2016



Water color Barn Owl by Carole Sheftic

Material list

140 lb Arches w/c paper (Hobby Lobby) 1/4 sheet or at least 10x12

Clear sheet of acetate or velum (Sheet protectors work great)

Black sharpie fine line or Ident I Pen

Soft graphite pencil or Graphite paper

Surface like foam core to secure your paper ...and **Masking tape**

W/c palette with workable surface..(if you do not have one) in the photo above I used a top of a Dollar Tree Shoe Box..under side even has the dividers for your paint!!!! Wipe down with an alcohol swab so that the paint does not bead. (**I DO NOT** prefer the little round palettes!)

Small sea sponge

Xacto knife w new blade

Hair Dryer

Trowel Type Palette Knife..plastic or metal

Tooth Brush

Glad Press and Seal (about 8 in square)

Brushes: ¾ or 1" Flat..selection of rounds like #3 , #6 , and # 8 in good shape

An old scruffy ¼ or 3/8 flat brush

Modeling Paste or Texture paste such as Sand or Fiber (I will have some to share)

Paint colors: **See color swatches above!**

Black **Raw Sienna** or Yellow Ochre

Neutral Tint (Optional but handy to have)

Paynes Grey or Ultramarine Blue to make your own PG

Burnt Sienna

Rose Madder or Aliz. Crimson

White Gouache