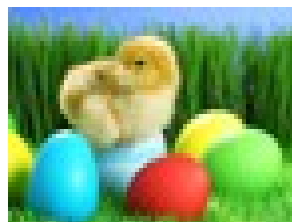




May 2014 Nature Coast Decorative Artists

Volume 16 Issue 5

Letter from the PREZ :



Hi Everyone,

Hope you all had a Happy Easter.

We sure are a busy bunch o ladies!

The basket lunch exchange last month was so much fun!

Your glass paintings showed lots of creativity and Secret Sisters were all oohs and aahs.

Then we hosted the WWSC Open house.

The refreshment table was brimming and aptly orchestrated by Sandy Mihalus, Jean Thompson and Dottie Ptaszynski.

Our display table showed a wide variety of painting techniques and many guests were given information by Ellen Annibali, Mary Davis, Marilynne Kelly and Carole Graves. Carol Hechler and Jeanette Seese displayed their wares and helped out where needed. Doris Trudeau and Joe came, greeted and encouraged many old friends. So many gave us compliments and showed their appreciation for putting the event together. A BIG Thank You for your help ladies!

Those who missed the Open House should visit the Pine Needle Basket Club, the Rock Hounds and other clubs to see the beautiful work. Pictures should be up on their website www.wwseniorclub.com by the time this newsletter comes out. You will want to see all the displays. Some clubs have no membership fee so it is worth it to check out their meetings.

There was lots of good discussion last meeting on what we want to do for our fund raiser. There will be more information at the May meeting but be sure to read the meeting minutes and Sandy Mihalus' Victorian Tea column to get up to speed.

Coming up in May are two beautiful projects you won't want to miss. Mark your calendar for the 3rd and the 31st. See the Program Column for information.

Can't wait to see y'all May 3rd.

Keep those brushes moving!

Pat Otto



Programs... Seminars and Workshops: *Linda Duff and Kathi Bruckner*

May 3rd Workshop...with Pat Landry



Our May project will be this adorable pitcher with mini stroke flowers taught by Pat Landry. Pat Otto had previously ordered the pitchers for anyone interested but of course you can do it on any surface of your choice. Pat Otto will prep the pieces with Liberty spray. The project will be done in oils. There will be three colors: Ultramarine Blue, and a yellow and Sap green. Pat Landry will provide a palette if needed.

The class fee is \$5 and the pitcher is approx. \$6.95.

Bring your "small" rounds and flats for this project.

Our Fifth Saturday (May 31st) Workshopwith Carole Sheftic

Carole will be teaching this Glenice Moore design of Two Zebras. The class fee is \$10 for the full day workshop. Please bring a lunch. The Class starts at 9 a.m.

It is done in Traditions Acrylics on a 12x16 canvas. Carole will be furnishing the paints and mediums. The pattern will be handed out at the May 3rd workshop. If you can not make it to the May 3rd meeting please have someone pick up your pattern. So that we can get the project completed on May 31st the pattern must be completely traced on the canvas before coming to class.

The pattern **WILL NOT** be on the website so please see Carole if other arrangements need to be made for you to get the pattern.

Suggested Brushes needed: One or two... $\frac{3}{4}$ or 1 inch flat background brush (like a one stroke). Your favorite $\frac{1}{4}$ to $\frac{1}{2}$ inch flats or angles, a $\frac{1}{4}$ or $\frac{1}{2}$ inch rake, small detail rounds for small areas and your favorite liner.



Ways and Means Monthly and Birthday Raffle...Sharon Poorman

The theme for the extra raffle for May is "TIN". This is to be donated to the club. We can't wait to see what everyone brings in for the cup auction.

Those signed up to bring in gifts this month for the Birthday Raffle are Sharon Poorman, Eileen Peters, and Mary Davis.

Just a reminder we have one person for June, July and 2 in September. We try to have 3 gifts each month. Ladies if you want to sign up for a different month (other than your Birthday)

PLEASE get with Sharon so she can write you down on a month. ALSO if you didn't bring your gift because you didn't make that meeting, please bring it any month you chose.

Sharon will call you to remind you to bring your gift just in case you forgot or you can text or e-mail her to arrange a different date. We like to have at least 3 gifts on the table.



Nature Coast Decorative Artists Meeting Minutes



Nature Coast Decorative Artist Chapter Meeting
Weeki Wachi Senior Center
Spring Hill, FL
Date: April 5, 2014

President: Pat Otto called the meeting to order at 9:15 am with a welcome back to Doris Trudeau. Doris told us that she will be undergoing back surgery in the next couple of weeks. She and Joe are planning to move to their new home in Woodstock, Ill.

Secretary: The March minutes were in the newsletter. A motion was made to accept the minutes by Sharon Poorman seconded by Marilyn Kelly. The motion passed.

First VP-Programs: Pat Otto will order the porcelain pitchers for the May program to be taught by Pat Landry. Price will be approximately \$6.50. Pat Otto will prep the pieces with Liberty spray. The project will be done in oils. There will be three colors: Ultramarine Blue, and a yellow and Sap green. Pat Landry will provide a palette if needed. *May fifth Saturday is Carole Sheftic teaching an acrylic canvas of two Zebras. (*editors notes). June project will be a reverse glass taught by Pat Otto using pen, ink, acrylic and oil paints. *June is a picnic and demo.....Pat will teach in July.

Second VP-Membership: Pat Landry reported there were 20 members present. She has WWSC membership cards for our members and she would like to verify membership numbers on SDP membership cards.

Treasurer: The Treasurer's report was in the newsletter. Pat Landry made a motion to accept the report, Sharon Poorman seconded it. The motion passed.

Sunshine: Jeanette Seese reported that she has sent out birthday cards as well as a get well card to Andi Dignard for a broken rib and she will send a get well card to Beverly Brockschmidt for her hip replacement surgery.

Secret Sister: Gifts were exchanged and gifts for members not present were taken by Sharon Poorman and Carol Kuszik. Jeanette thanked all who participated for showing such generous spirits.

Library: Rhonda Norton had books and DVD's displayed and announced that we have a new DVD by David Jansen on Painting Trees. She has reviewed it and said it was very good.

Newsletter: Winner of the sketch participant drawing was Jeanette Seese.

Old Business: Pat announced the WWSC Open House is next Saturday, April 12 from 9 to 12. NCDA members have volunteered to help with our table display and providing refreshments. The table display will be our Community Service project for this year. She has made a new NCDA brochure which will debut at the Open House and our business cards will be available as well.

Pat has also created an WWSC website, www.wwseniorclub.com. The website is announced on a bookmark that lists all the WWSC clubs.

The donation of light breakfast refreshments will be our Philanthropic project for this year. Pat also announced she is the newly appointed Director of WWSC. Congratulations Pat!

Dottie Ptaszynski has publicized the Open House in all of the venues where we announce our meetings.

New Business: There was a lengthy discussion about making changes to the concept of Tables and Treasures and our Christmas Party this year with the goal of having fun events without the labor intensity of previous years. JoAnne Raymond moved that we have a Hats off to Painting Tea on November 1, 2014 from 11 to 2. It was seconded by Marilynne Kelly and the motion was passed. Hostesses would have 6 people at their tables. They would be in charge of painting a centerpiece, providing a tablecloth and cloth napkins and teacups and saucers. There will be a Chinese auction of painted objects and baskets (baskets will have a starting value of \$20.00) A committee chaired by Sandy Mihaulis was formed. Committee members include Pat Otto, JoAnne Raymond, Ellen Anniballi, Charlene Seimes, Dottie Ptaszynski, Carol Hechler, Rhonda Norton, Pat Landry, Carol Kuszik, Jeanette Seese, Marilynne Kelly. They will make decisions as to the food and beverages, favors, and plates and utensils. This will be our major fund raiser. Instead of a Christmas Party we will have a regular meeting for members in December that will include an ornament exchange. There will be Christmas refreshments and the Secret Sister Reveal. Birthday raffle monthly assignments will need to be adjusted because of these changes. It will be in the newsletter.

Show and Tell: Eight members presented pieces. Some included pieces from the Sunshine State retreat and the Louise Jackson Seminar.

Ways and Means: Sharon did the Birthday Raffle and Wood Piece Raffle. She announced in May we will have a tin raffle and in June we will have a glass raffle.

Hospitality: The President thanked everyone who brought in refreshments this month. Anyone who would like to contribute refreshment for our meetings would be greatly appreciated.

Board Meeting: Will be 10:00 AM Tuesday April 8 at WWSC

The meeting adjourned at 11:15
Respectfully submitted,
Carol Kuszik, acting secretary

Secret Sister Gift Exchange...*Jeanette Seese*

The next Secret Sister gift will be at your discretion. Any appropriate time, like a birthday, would be good. Keep in mind those who are snow birds. The last exchange will be at Christmas.



At the first exchange in April, the recipients expressed delight when opening their gifts. Your generosity has been greatly appreciated!



Sunshine Jeanette Seese



Get well cards were send out to:
Andi Dignard and Beverley Brockschmidt,
and birthday cards to the April Birthday Gals.

Our Birthday for May is....Mary Davis..... May 14th
Please let Jeanette know if any one needs a special card.

WWSC News

WWSC welcomes a new club...

GLORIOUS GOURD CLUB
Second Tuesday of the month
1:00pm - 3:00 pm

First meetingMay 6

This club is open to all members of WWSC.
You do not have to belong to any other group. It is
for painting, colored pencil, wood burning,
carving, and mixed media, or any other way you
want to decorate gourds. It is for sharing ideas and
techniques.

There are no committees, officers or dues at this
time.

Bring a show and tell item to the first meeting. You
do not have to have decorated it yourself.

The NCDA board meets at 10AM, the WWSC
member meeting and **pot luck** lunch is 12-1:00.

Come for lunch and stay for the meeting.

Hope to see you there.

Pat Otto



Victorian Tea Luncheon

Chaired by Sandy Mihalus

Our fund raiser for this year will
be a **"Victorian Tea Luncheon"**.



This is a new, fresh, and fun idea
for our chapter. It will be held on November 1,
2014, at the Weekie Wachee Senior Club where
we hold our meetings.

The idea is to have a party complete with tea,
salads, and little desserts for our guests.

We only have enough room for 13 tables, so it
will remain simple. Each table needs a hostess
who will be responsible for decorations, party
favors, and selling tickets for her table of six.

The hostess is encouraged to wear a hat, but it is
not mandatory.

The theme is a tea party, but the hostess has the
freedom to create the table as she wishes within
those limits. Some ladies have mentioned a Paris
flair, or Mad Hatter tea party. These are fun,
creative ideas, which are appropriate.

Please don't think of holidays, Autumn, or ugly
fish that hang on a wall and sing. We would like
to keep it feminine and pretty.

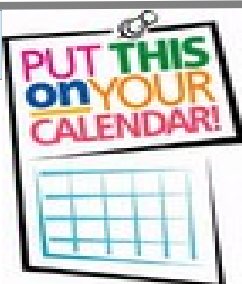
We cannot have too many volunteers. If you do
not want to be a hostess, we need greeters,
workers for the kitchen, and a dozen other jobs.
We need gift baskets, and pretty items to raffle.

Sandy's plan, and she hopes to succeed, is to
only have 3 actual meetings. We can
communicate most information via email.

**PLEASE EMAIL SANDY AND TELL HER HOW
YOU WOULD LIKE TO PARTICIPATE. THE
SOONER, THE BETTER.** This will be FUN!
We are looking forward to hearing from you.

Our Next Board Meeting

The May Board meeting
Tuesday
May 6th
at the WWSC building
at
10:00 a.m.



Membership.... Pat Landry

Please remember to keep Pat updated on any changes with your membership information.

Our snowbirds are flying north! We will miss you. See you next fall!

Hospitality

Hospitality for May:

Rhonda Norton
Marilynne Kelly
Ellen Annibali

Thanks to everyone...as usual all donations are greatly appreciated.



Library....Rhonda Norton



The Library has recently purchased a new video. "Painting Trees" by David Jansen, it runs 2hrs long. It is a very good video and covers how to paint background, middle ground and foreground trees and covering different atmospheres.

There is a small waiting list, so see Rhonda to add your name next.

NCDCA Treasurer Report...Carol Hechler

Nature Coast Decorative Artists - April 2014

Financial Report



Beginning Balance

\$5,257.96

INCOME

Project Fees 4/5 Demo Class (Pat Otto)	\$40.00	
Raffle - Birthday	\$60.00	
" - raw / wood	\$48.00	
5th Sat. (Hazel Dickson)	\$25.00	
Total	\$173.00	\$5,430.96

EXPENSES

Project Instructor Fee (Hazel Dickson) 5th Sat 3/29	\$100.00
Project supplies Pictures 3/29 5th Sat	\$7.76
Demo Class Fee 4/5 (Pat Otto)	\$50.00
WWSC 3/29 5th Sat	\$25.00
Library (Rhonda Norton)	\$25.95

Total \$208.71

Ending Balance

\$5,222.25

Student's General Supply List for a Seminar / workshop or Class:

- Disposable or Dry Wax Palette
- Paper Towels - for clean up
- Pencil - for transferring patterns to surface
- Sandpaper/disk (only if needed for project)
- Water basin - to clean brushes (2 sections nice)
- Stylus Tool
- Graphite paper (light and dark)
- Tracing paper - for transferring patterns
- Ruler - to measurement placement
- Scissors
- Palette Knife
- Cotton Swabs
- Chalk Pencil
- Ball Point Pen (for note taking)
- Notepad (to take class notes)
- Kneaded Eraser (Art Eraser) - to remove pattern lines
- Masking or painters' tape
- Brushes (your favorites)
- A bottle of your basecoat color for touch-up
- Sponge Roller - for base coating, optional
- Old Toothbrush - used for certain techniques
- Blow Dryer or battery mini fan
- Odorless thinner and or/mediums if using oils



For those of you who would like to improve your drawing skills we are again giving you a practice project each month.

Draw the watering can below using the squares and dots as a guide

Members who bring the drawing in to the next meeting are eligible for a drawing for a prize. Those who bring in the next consecutive 10 drawings will have their NCDA membership paid for 2015.



Please bring your drawing to the next meeting.

2014 Board Members and Committee Heads

PRESIDENT*

Pat Otto
352-746-2688
pjottodesigns@gmail.com

1ST VP PROGRAMS*

Kathi Bruckner / Linda Duff
352-228-4359/248-703-6529
kathibruckner@aol.com
LadyOtroy1@aol.com

2nd VP MEMBERSHIP*

Pat Landry
352-249-7221
plandry9@tampabay.rr.com

SECRETARY*

Bev Brockschmidt
352-527-8737
fbrockschmidt@tampabay.rr.com

Treasurer*

Carol Hechler
352-684-2939
chechler@tampabay.rr.com

NEWSLETTER*

Web Master
Carole Sheftic
352-489-2374
csheftic@bellsouth.net

SUNSHINE& Secret Sister

Jeanette Seese
727-857-1045
seese_j@yahoo.com

PHOTOGRAPHER

Pat Thompson
352-793-6615
pthompson119@embarqmail.com

PUBLICITY

Dottie Ptaszynski
352-527-2778
dmtaz@tampabay.rr.com

LIBRARIAN

Rhonda Norton
352-688-9267
RNorton@tampabay.rr.com

HISTORIAN-

Pat Thompson
352-793-6615
pthompson119@embarqmail.com

CHARTER MEMBER*

Doris Trudeau
352-686-4248

PHILANTHROPIC

The NCDA Board

COMMUNITY DISPLAY

The NCDA Board

Ways and Means*

Sharon Poorman
352-249-7334
Spoorman49@gmail.com

**asterick by the title denotes a voting member*

[Weeki Wachee Senior
Citizens Clubhouse](#)

3357 Susan Dr.
Spring Hill, Florida.
Telephone: 352 684-6943

**Please visit our web site at
www.naturecoastdecorativeartists.com**