

**February 2016****Nature Coast Decorative Artists****Volume 19 Issue 02****A Letter from our President,**

Wow already our first meeting of the year is under our belt. We had some of our members back with us who we hadn't seen in a while, nice to see you all.

I want to thank everyone for bringing their items and treasures for the sale at the January meeting. Also thanks to all who brought the yummy soups, salads and deserts. Everything was really good and we had a variety of selections.

Coming up in February Hazel will be teaching her piece titled "In the Garden". She showed us all how to paint the background at the end of the meeting. This class should be a lot of fun.

I won't be there for the February meeting. I am going on a cruise with my daughter and SIL. {Its a tough life but someone has to do it, LOL} We are calling it our Super Bowl Cruise, and like last year we will be able to watch the Super bowl on a really big screen on the back of the ship. Good time was had by all last year.

So unfortunately I won't be there to take the class but I sure will be looking forward to seeing them at show and tell or viewing the pictures that are taken during the class. I know you all will have fun, and do an awesome job. Hazel is a good teacher, and it looks like it will be really pretty when finished.

I am looking forward to another fun and exciting year, and look forward to the painting that Jeanette has in store for us. I think we have some fun and exciting things coming up this year.

So I want to wish you all a Happy Valentines day, and I will see you all in March.

Hugs,

Linda



NATURE COAST DECORATIVE ARTIISTS

Monthly Minutes

January 2, 2016 Business Meeting Minutes -WWSC

Meeting called to order 9:30 AM by President Linda Duff

President:

Linda welcomed everyone and wished them a Happy New Year. She expressed her appreciation for the wonderful Christmas Party and reiterated her thanks to all the hard workers who made it so nice.

1st VP Programs:

Jeanette Seese announced that Hazel Dickson will be our teacher next month. Hazel is teaching a field of flowers on a 16" x 20" canvas in acrylics. She will be demonstrating the background technique today. Hazel said the background should be prepped and the pattern on before class. She passed out patterns, instructions and a supply list.

Jeanette placed a signup sheet on the front table for teachers wishing to teach this year. There are 10 slots for 10 months. Teachers were asked to pick a month and state the project and the medium they would be teaching in. Jeanette will have a write up with guidelines for teachers available.

There was a discussion on whether we would like to procure "Big Brush" teachers this year. Jeanette said she was open to be contacted for further discussion.

2nd VP Membership:

Rhonda Norton welcomed a guest, Faith Ann, Mary Davis' daughter. Faith had been a member many years ago and has moved out of the area. She also introduced new member, Kay Wells, originally from NY. Kay was a chapter member there and now has a home in Florida.

Rhonda reminded members that she will have to see their 2016 membership cards when we receive them. Some members are being issued new numbers and she will need them for her files. Rhonda will have a current members list available for pick up at the next meeting. As of today we have 25 members. It was suggested to have a new pictorial membership sheet printed. Pat Otto volunteered to print one up.

Secretary:

Pat Otto stated there are no minutes to approve because there was no meeting in December due to the Christmas Party.

Treasurer:

Carol Hechler asked to have the Treasurer's Report accepted as printed in the newsletter. Carole Sheftic so moved and Beverly Brockschmidt seconded the motion. It was approved. Carol Hechler

commented on the fact that Kally K's Restaurant returned our deposit in full for the Christmas party and that they were very amiable to work with.

Web/Newsletter:

Carole Sheftic was thanked for a great job. She said all is going smoothly. She reminded members to not just check the first page for info but to click on the tabs to go to the various pages to be sure to get all the information. The front page just has "mini news" not the whole story. Carole also thanked those who brought some unconnected links to her attention. She said she appreciates member's input.

Ways and Means:

Ellen Annibali reported that there were no gifts this month. There are two birthdays in February. It was decided to go back to the way we used to do the raffle, that is, the person whose birthday it is brings a \$20 gift, wrapping the package attractively. There will be cups in front of the packages for raffle tickets.

It was also decided that you are responsible for bringing breakfast snacks on your birthday month, that way no one will forget which month they signed up for. Those who are snowbirds or have December birthdays may sign up for a substitute month.

Sunshine:

Mary Davis sent out January cards and is thinking of a theme for next month. She also mentioned a painting raffle at the library.

Publicity:

Eileen Peters was not present.

Librarian:

Carole Graves was not present.

Photographer:

Pat Thompson volunteered for the position

Secret Sister:

Linda Duff volunteered for the position. It was suggested that the Secret Sisters send cards only until the final reveal in November or at the Christmas Party.

Philanthropic and Historian: positions have not been filled.

Unfinished/Miscellaneous Business:

There was discussion on the Tables and Treasures fundraiser. Several people will check halls for price and availability.

The Sunshine State Decorative Artist is the Florida State Retreat, being held March 31 - April 3, 2016. The retreat location is DaySpring Retreat Center in Ellenton FL. The website is www.ssdaflorida.com Please sign up through the SSDA site not the DaySpring site. The deadline to sign up is January 16.

Jeanette Seese brought in the last issue of the Decorative Painter that featured an article by member Carole Sheftic. Congratulations and applause ensued.

Show and Tell:

Members showed the projects they have been working on and Marge Thompson brought some samples of her work that she is willing to teach here and at Manatee Haven Decorative Artists.

Meeting was adjourned at 11:00

Hazel's demonstration and our "Souper" Lunch followed.

Submitted by Secretary Pat Otto



Programs

submitted by Jeanette Seese



I'm happy to report that the calendar of classes for the year is almost filled!

In February, we'll have Hazel Dickson teaching an acrylic painting with an interesting background technique. Those of you who were at the January meeting were treated with Hazel's demo, and later her distribution of the actual 16 x 20 size pattern! It should be a fun class; don't forget to sign up on the website. At the end of the Newsletter you'll find instructions for prepping the background and a list of materials.

In March we hope to have Darla Wilhite teaching a portrait.

In April Pat Otto will be teaching a preening swan in oils on canvas.

In the coming months we'll also have classes featuring colored pencil, pen and ink, Chinoiserie, and watercolor. I'm looking forward to the coming year with anticipation!

Editors note: Please keep checking our website: www.naturecoastdecorativeartists.com for photos, and updated info on our home page and the Workshop Calendar tab at the top of our home page. These areas are updated as information on class projects and material lists become available.



Membership....

Rhonda Norton

Rhonda would like to update everyone on membership. We are now at 24 members including Doris.

Last month we welcomed a new member Kay Wells.

She will have a printed membership list for everyone at the February meeting. Also SDP has changed everyone's membership number so that when you receive your new card Rhonda will need to get your new number.



Sunshine.....

Mary Davis

Happy Birthday to Jeanette Seese on February 7th.

Don't forget to update Mary if you know of any of our members who need a get well card or just a thinking of you card.

Editors Note: Committee chair and bd member contact information is always at the end of each newsletter & on the website.



Treasurer.....

Carole Hechler

NatureCoast Decorative Artists- Dec 2015

Finacial Report

Beginning Balance **\$4,921.62**

INCOME

Ways & Means Christmas Raffle	\$230.00
Membership	<u>20.00</u>
	\$250.00

Sub Total **\$ 5171.62**

Expenses

Christmas Party Luncheon (Kally-K's)	270.15
SDP Libility Insurance	\$66.00
Carol Kuszik (xmas party supplies)	59.63
SDP Annual Chapter Form	<u>38.30</u>

EXP. Total **434.08**

Ending Balance 12/15 **4737.54**

Check #1688 to Kally-Ks for \$25.00 deposit for room was returned (they hold the check until the party. If everyone show's up you get the ck back

January 2016Financial Report

Beginning Balance	4737.54
INCOME Membership dues	<u>20.00</u>
	total \$20.00

EXPENSES

*WWSC yearly donation	\$385.00
-----------------------	----------

Ending January Balance **4372.54**

***we are now paying \$35.00 every Saturday**



Ways and Means and Hospitality

Ellen Annibali

"Fabulous February" Birthday Raffle! and Info on Hospitality

This year, please bring your "Birthday Raffle gift" with a value of \$20.00 in an "attractively wrapped" box or gift bag on your Birthday Month.

As before, there will be a "cup" in front of each package for raffle tickets with a chance to win. If you will not be present at that time, please send your gift ahead of time to Ellen to hold for your Birthday Month, or you may "switch" to another month by calling or emailing Ellen if you'd like to see the lucky winner in-person!

Hospitality NOTE: We, as NCDAs Members are also responsible for bringing a light "Breakfast Snack" (on your Birthday Month to make it easier to remember) as we have in the past. If you are a Snowbird or December baby, please email Ellen the month you will participate. We always welcome favorite recipes!

February Birthday Gift Gals:

Jeanette Seese - 2/7

Pat Thompson - 1/7 (moved)

Bev Brockschmidt - 10/20 (moved)

Happy Birthday to all of you & don't forget your "ones"!

.....



A reminder to our Teachers

from Jeanette....

Please remember you are responsible to:

Provide a pattern, list of supplies and a photo to the Programs Chairperson 3 months before the date of the class. This is necessary for publication in the NCDAs Newsletter.

A sentence or two about the project may be helpful (such as, surface suggestion, name of original artist, or any other pertinent information).

Provide a packet for each student containing a good quality colored photo, a pattern, and directions.

Be assured that your fellow members will appreciate the extra time you have spent doing the above to help make their painting experience with you that more enjoyable.



Linda Duff Secret Sister:

I have asked Jeanette to print out the Secret Sister forms, and she is going to hand them out at the February meeting.

As we talked about at the January meeting and was voted on, this year we will have a secret sister, but we will send out cards from time to time, (you can paint one for them, or if you find that special card, you can do that too)

birthday, anything special, during the year, and then at the December meeting we will bring a gift for our secret sister. Should be fun and something different.

Please fill out the forms and in March when I'm there I will collect them and then we can get started.

2016 Board Members and Committee Heads

PRESIDENT*
Linda Duff
248-703-6529
LadyoTroy1@aol.com

Treasurer*
Carol Hechler
352-684-2939
chechler@tampabay.rr.com

PUBLICITY
Eileen Peters
727-862-8166
eileenjpeters@icloud.com

**PHILANTHROPIC
and
Historian positions
available**

1ST VP PROGRAMS*
Jeanette Seese
727-857-1045
seese_j@yahoo.com

NEWSLETTER*
Web Master
Carole Sheftic
352-871-3786
csheftic@bellsouth.net

LIBRARIAN
Carol Graves

COMMUNITY DISPLAY
The NCDA Board

2nd VP Membership*
Rhonda Norton
352-688-9267
RNorton7@tampabay.rr.com

SUNSHINE
Mary Davis
352-596-7344
mdavis350@tampabay.rr.com

Secret Sister
Linda Duff
See Pres. Info

Ways and Means*
Ellen Annibali
352-232-6246
sunnylane02@hotmail.com

SECRETARY*
Pat Otto
352-746-2688
pjottodesigns@gmail.com
m

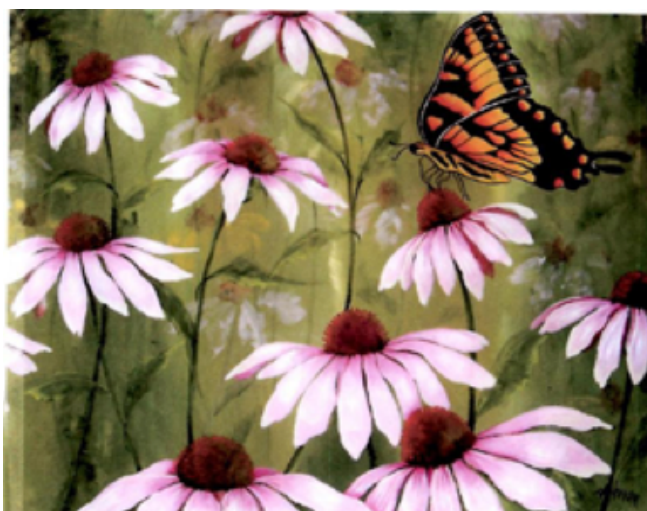
PHOTOGRAPHER
Pat Thompson
352-793-6615
pthompson119@enbarqmail.com

CHARTER MEMBER*
Doris Trudeau
815-337-3237
1215 Gerry St
Woodstock, Ill 60098

Past President *
Pat Otto
352-746-2688
pjottodesigns@gmail.com

Visit our Web Site at www.NatureCoastDecorativeArtists.com Note * designates voting board members

Prep for Hazels Class..



Thick Puddles of Acrylic Paint ..Plantation Pine..Antique Green, Soft Sage and Avocado Dip placed randomly across the top of the canvas. Hazel prefers the darker colors at the outside and lighter values toward the middle.



Materials needed for prep:

16x20 canvas

Spray bottle with water

Covered surface and paper towels

Large brush

Colors needed for Prep.....

Celery Green.....Plantation Pine...Antique Green....Soft

Sage...Avocado Dip

Process:

1. Base coat canvas in Celery green and let dry completely.

2. "Drip" technique... This is done very quickly. Work wet and quickly, do not let the paint dry until you are pleased with the look. No two will look alike.

A. Cover your work area with plastic. Be ready to soak up puddles with paper towels.

B. Place a layer of newspaper and paper towels on the area that you will horizontally be setting your canvas...look at photos above

C. Spray and brush a coat of water over the entire canvas. Not runny but all wet.

D. Apply the Plantation Pine..Antique Green..Soft Sage and Avocado Dip paint in thick puddles across the top of the wet canvas. (Hazel prefers to have the darker colors towards the outside.) Check above first photo. Hold vertically and let it start to drip.

E. To spread the colors, spray lightly with a bottle of water, letting the paint drip down the canvas. See second photo. Just enjoy the process. If the paint is thick you may have to move it a little with a brush. There are no mistakes.

F. Make believe you are back in kindergarten and playing !!! Let it dry. A hair dryer may be used to speed up the drying process.

G. Transfer on pattern.

NOTE: Hazel handed out the pattern at the January meeting. If you did not get one she will have them before class for you to put on

In The Garden

Taught by Hazel Dickson

SURFACE: 16" x 20" Canvas Board .,

PAINTS: DecoArt Americana Acrylics

DA208 Celery Green

DA113 Plantation Pine

DA235 Citron Green

DA207 Soft Sage

DA147 Antique Green

DA254 Avocado Dip

DA067 Lamp Black

DAO1 Snow (Titanium) White

DA129 True Red

DA238 Cadmium Orange

DAO10 Cadmium Yellow

DA064 Burnt Umber

DA267 Poodleskirt Pink

DA063 Burnt Sienna

DA151 Royal Fuchsia'

DA024 Hi-Lite Flesh

BRUSHES:

Scharff Brushes, Inc. 1-888-SCHARFF (724-2733) www.artbrush.com

Series 140 #10, #14 Flat

Series 140 #24 Large Flat (or any large brush for basecoating)

Series 405 #5 Round

Series 455 #0 Dresden Liner

ADDITIONAL SUPPLIES: Old plastic cloth Spray bottle (filled with water)

Hair dryer Paper towels.